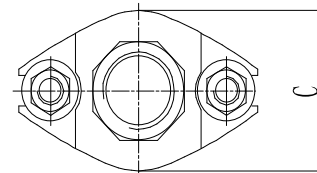
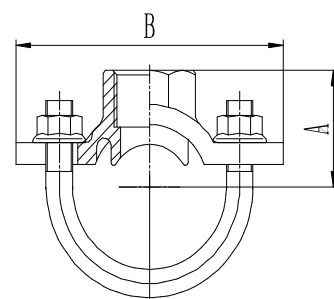


# DMHMT3

## Saída de sprinkler



Diâmetro nominal mm/pol	Diâmetro externo mm/pol	Pressão de trabalho MPa/psi	Dimensões mm			Diâm. do furo mm* <small>Ver nota</small>	Parafuso Porca
			A	B	C		
25*15	33,7*21,3	2,07	39	84	50	25	M10*53
1*½	1,327*0,825	300				1	
25*20	33,7*26,9	2,07	45	84	50	25	M10*53
1*¾	1,327*1,05	300				1	
32*15	42,4*21,3	2,07	40	90	56	30	M10*53
1*½	1,669*0,825	300				1,18	
32*20	42,4*26,9	2,07	42	90	56	30	M10*53
1*¾	1,669*1,05	300				1,18	
32*25	42,4*33,7	2,07	52	90	56	30	M10*53
1*1	1,669*1,327	300				1,18	
40*15	48,3*21,3	2,07	45	90	56	30	M10*63
1½*½	1,9*0,825	300				1,18	
40*20	48,3*26,9	2,07	45	90	56	30	M10*63
1½*¾	1,9*1,05	300				1,18	
40*25	48,3*33,7	2,07	55	90	56	30	M10*63
1½*1	1,9*1,327	300				1,18	
50*15	60,3*21,3	2,07	50	95	56	30	M10*76
2*½	2,375*0,825	300				1,18	
50*20	60,3*26,9	2,07	50	95	56	30	M10*76
2*¾	2,375*1,05	300				1,18	
50*25	60,3*33,7	2,07	60	95	56	30	M10*76
2*1	2,375*1,327	300				1,18	
65*15	73*21,3	2,07	57	112	56	30	M10*92
2½*½	2,875*0,825	300				1,18	
65*20	73*26,9	2,07	58	112	56	30	M10*92
2½*¾	2,875*1,05	300				1,18	
65*25	73*33,7	2,07	68	112	56	30	M10*92
2½*1	2,875*1,327	300				1,18	
65*15	76,1*21,3	2,07	57	112	56	30	M10*92
2½*½	3*0,825	300				1,18	
65*20	76,1*26,9	2,07	58	112	56	30	M10*92
2½*¾	3*1,05	300				1,18	
65*25	76,1*33,7	2,07	68	112	56	30	M10*92
2½*1	3*1,327	300				1,18	



**\*Nota: Diâmetro Variável (verificar in loco)**